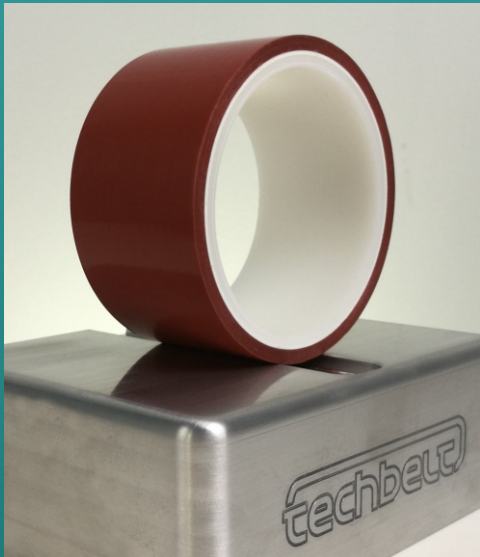


### PTFE Adhesive Film Tape

Nominal Total Thickness:	<b>0.1mm</b>	Elongation:	<b>100%</b>
Adhesion to Steel:	<b>6.5 N/19mm</b>	Tensile Strength:	<b>155 N/5cm</b>
Breakdown Voltage:	<b>8 kV</b>	Temperature Resistance:	<b>-73 / +260°C</b>
Colour:	<b>Red - Orange</b>	Length:	<b>33m</b>
Width:	<b>25 - 38 - 50mm</b>	Core ID ø:	<b>76mm</b>



### Material Properties

- Extremes of heat and cold resistance: Minus -73°C to + 260°C
- Chemical inertness: Affected only by a few rare substances at very high temperatures
- High Release from sticky materials 'Non-Stick'
- Easy cleaning (Nothing bonds permanently)
- Low friction co-efficient: 0.04 – 0.10; depending on load and surface speed
- Chemical corrosion and moisture resistance
- Mildew and fungus resistance
- Ultra-Violet, Infra-Red, Micro-Wave, Radio Frequency resistance
- Non Combustible – Self Extinguishing
- Excellent Conformability
- Lightweight and energy efficient for economical operation

### Additional Information

Techbelt TF-R62-AD is a red-orange specially oriented polytetrafluoroethylene (PTFE) film with high temperature silicone pressure sensitive adhesive. Ideally suited for roller wrapping for polyethylene extrusion, coating & laminating processes and electrical insulation for coils and transformers.

Prior to adhesion, clean the surface and remove any dust or oil. Whilst applying do not stretch material be careful to avoid any formation of air bubbles or wrinkles. To remove the tape, peel off slowly at an angle of 180°. We recommend storing this product at room temperature away from direct sunlight and moisture. For optimum adhesion the tape should be used within 12 months of purchase.

This material is unaffected by biological or chemical agents, heat or cold within its temperature range, or by most areas of the electric magnetic spectrum.

PTFE (Teflon®) begins to soften at 260°C, increasing wear rate. Somewhat above 300°C, fumes are given off and these should not be inhaled. COSHH data is available upon request. After contact wash hands thoroughly before handling or smoking tobacco.